



2/441-443 President Avenue KIRRAWEE, NSW



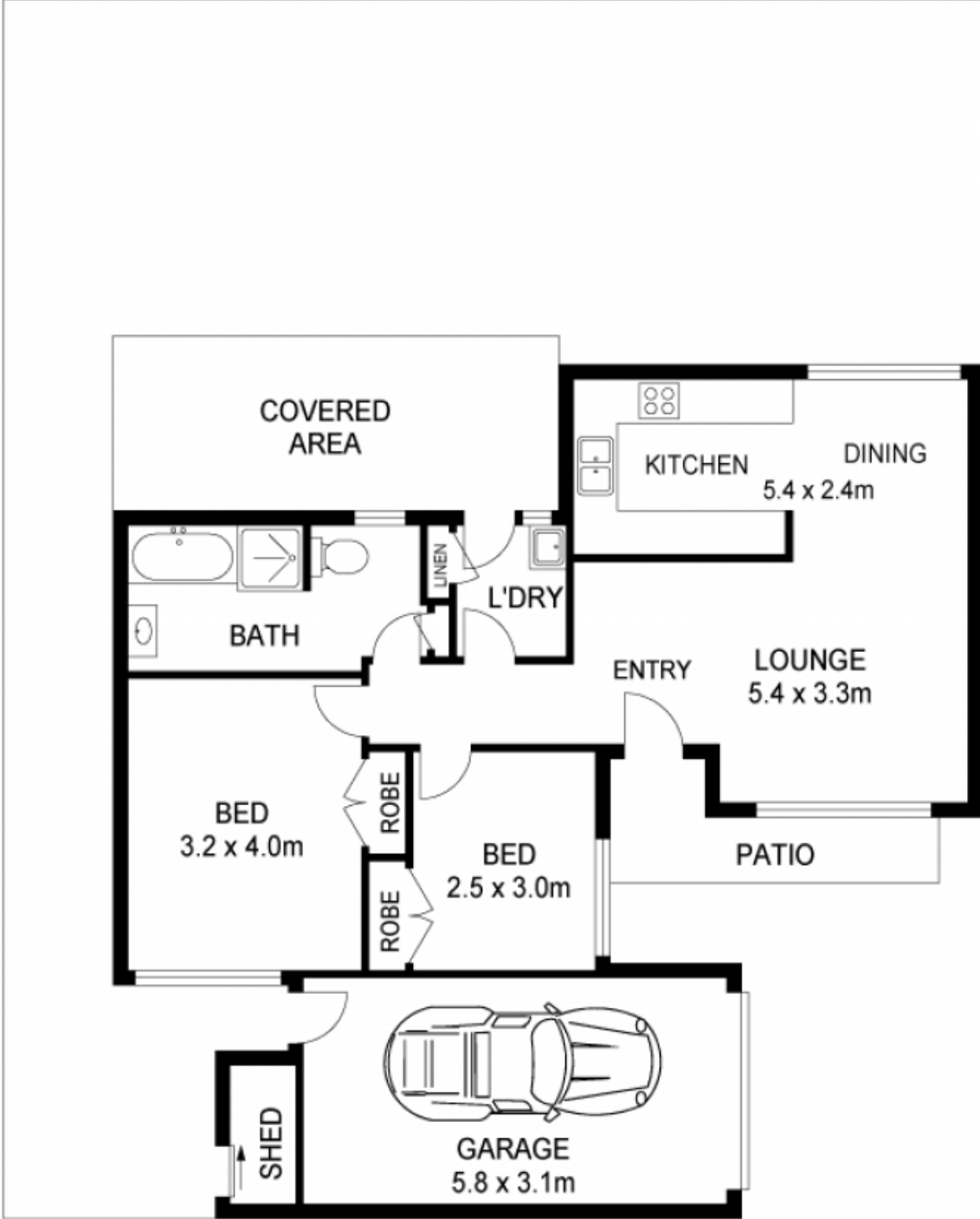
### Comfortable, Over-55s Villa

Located in proximity to Kirrawee Village, train station and South Village Shopping Complex, this tidy two-bedroom villa offers a functional yet easy-care, low maintenance lifestyle. A sunny, northerly aspect ensures the wraparound, fully paved courtyard is bright and sunlit all day, while the interior is light and welcoming. Private and peaceful, this comfortable, well cared for villa is the ideal place to downsize or invest.

**Price:** \$730,000 - \$750,000

**Stone Engadine**

(02) 9520 2296



2/441 PRESIDENT AVENUE, KIRRAWEE