

14 Nimba Close Smithfield, QLD



Tastefully Renovated Family Oasis

Set on a generous 750sqm block, this beautifully renovated 3-bedroom home is the perfect blend of style, comfort, and outdoor living. Thoughtfully updated throughout, with a stunning inground pool and spacious entertaining deck, this is the ultimate retreat for those looking to enjoy the tropical.

Price:

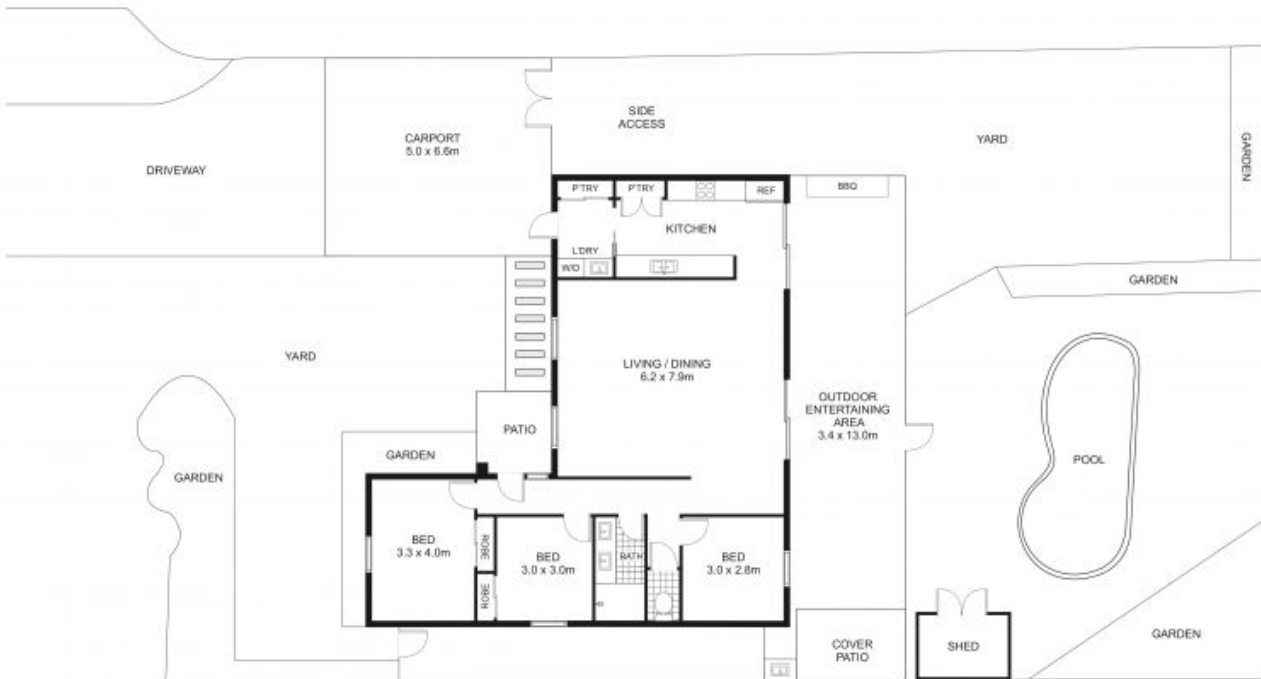
Offers in the \$700,000's



Michael Oxford

0417 716 709

14 NIMBA CL, SMITHFIELD



Renderings and floor plans are intended only as a general reference. Feature, materials, finishes, layout and actual measurement of unit may be different than shown.