



5 Keppel Place BENTLEY PARK, QLD

4

2

2

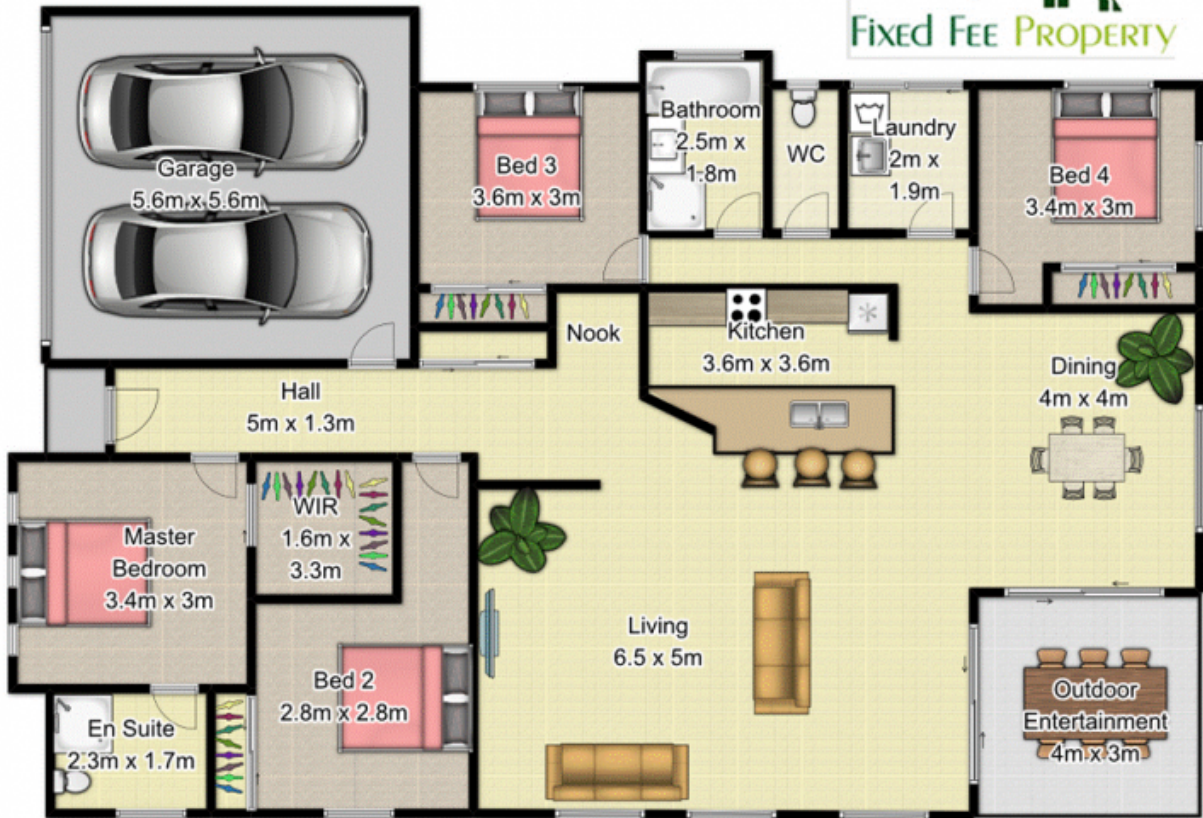
**PERFECT INVESTMENT OR FIRST HOME OPPORTUNITY**

Price:

Offers in the \$300,000's

Located in a very quiet street adjacent to park lands with views of the mountain ranges is this affordable home, ideal for investors, families or first home buyers.

**Stone Real Estate**  
07 4038 3800  
**Cairns Beaches**



Please Note: All care has been taken to ensure the accuracy of this plan. However, it is not a surveyed plan therefore dimensions and icons used are estimates only. This plan is for illustrative purposes only and should be used as such by any prospective buyer.