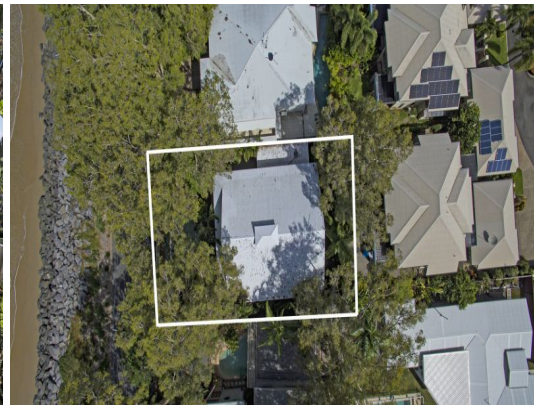


13 Arlington Esplanade



13 Arlington Esplanade CLIFTON BEACH, QLD



Absolute Beach Front Mansion !

This prestigious waterfront family home, located on the Southern End of Clifton Beach, personifies the lifestyle of Far North Queensland. One of the highlights of this magnificent home is the breathtaking ocean views of Double Island from all corners of the expansive undercover front deck area and saltwater pool.

Upstairs views of the passing dolphins and sea life continue, with the large open plan living area, dining room and kitchen. The architecture, elegance and sheer size of this family home is sure to leave a lasting impression.

Features:

- Absolute water front - 180 degree views
- 3 Level home - ocean views from every level
- Huge family size pool
- Expansive 11m x 3m front deck that has the most amazing ocean views
- Downstairs formal entry / reception room
- Stylish internal solid timber stairway to level 3

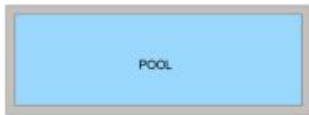
Price:

Offers Invited Over \$1,200,000

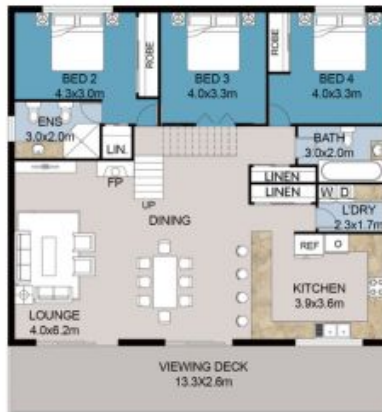
Stone Real Estate

07 4038 3800

Cairns Beaches



GROUND FLOOR PLAN



FIRST FLOOR PLAN



SECOND FLOOR PLAN



13 Arlington Esplanade, Clifton Beach

FLOOR PLAN

This floor plan including furniture, fixture measurements and dimensions are approximate and for illustrative purposes only. The Agent gives no guarantee, warranty or representation as to the accuracy and layout.