



1205/32 Shepherd Street Liverpool, NSW



North facing apartment in secure modern complex

Capturing a radiant north aspect with sweeping 360-degree rooftop terrace views, this contemporary apartment in 'The Foundry' within The Paper Mill precinct delivers a sophisticated and convenient lifestyle. Just a short walk to parks and Liverpool Station, and moments from Westfield Liverpool and popular eateries, residents also enjoy an infinity pool, exclusive gardens, low strata levies and award-winning design by SJB Architects.



Frank Bartolone

0411 477 758

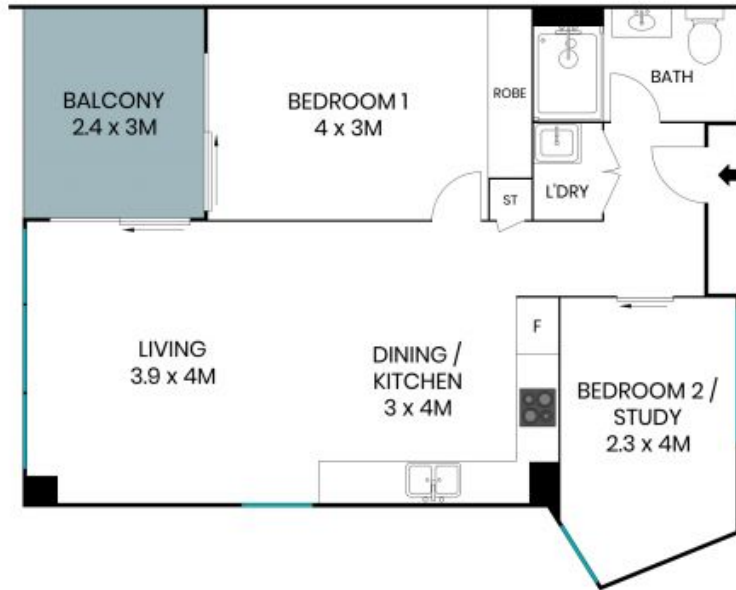


Angela McInerney

0435 348 141

1205/32 Shepherd Street
Liverpool

STONE



Internal Living: 63sqm
External Living: 21sqm
Total Living Area: 84sqm



The site plan and floor plan are not to scale; measurements are indicative and in metres. Bushes and trees are placed for illustration purposes. Plans should not be relied on. Interested parties should make and rely on their own enquiries. All other information provided has been collected from reliable sources but cannot be guaranteed for accuracy.