



3 Crawford Creek Place Razorback, NSW

4 1 3 3

OFFICALLY SOLD IN 5 DAYS BY ANTHONY GRIMA

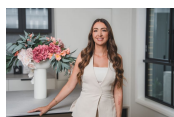
Serene Living Nestled within the serene and picturesque Razorback, this exceptional property spans 7.16 acres, boasting manicured gardens, sweeping lawns, and established trees. This meticulously designed estate features an exceptional family home, offering modern families an unparalleled opportunity for peaceful living amidst a tranquil acreage lifestyle.

Price: Contact Agent
Council Rates: \$923.00 p/q



Anthony Grima

0421 228 414



Rebecca Philp

0403 613 271

STONE



3 Crawford Creek Pl, Razorback NSW 2571



The floor plan is not to scale, measurements are in metres. Exterior elements are not in position.
Plans should not be relied on. Interested parties should make and rely on their own enquiries.
All other information provided has been collected from reliable sources but cannot be guaranteed for accuracy.