

6/67 Park Beach Road Coffs Harbour, NSW



Coastal Living Close to Shops & Beach

Bright and airy two-bedroom unit ideally positioned within easy walking distance to Park Beach Plaza, beautiful local beaches, and a great selection of cafes and restaurants.

Price: \$495,000 - \$510,000

Council Rates: \$651.50 p/q

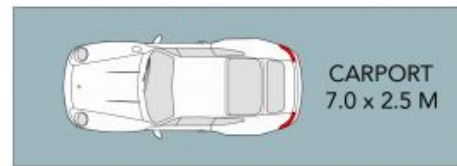
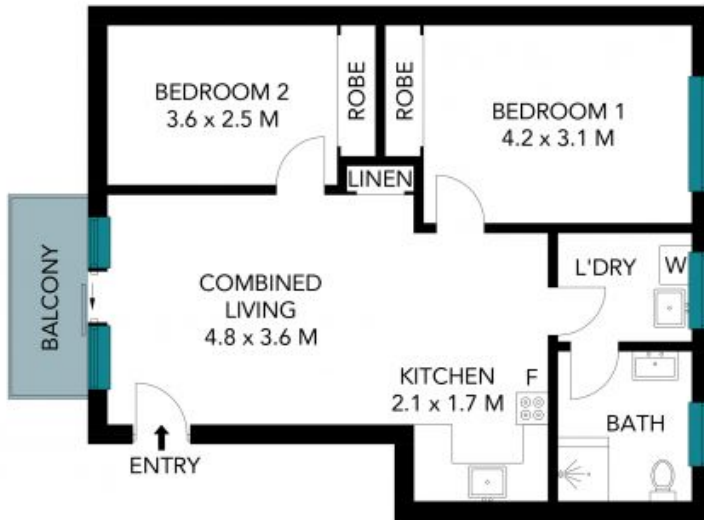
Strata Rates: \$950.00 p/q



Yvette Ward

0403 602 544

6/67 Park Beach Road
Coffs Harbour, NSW 2450



(NOT IN POSITION)

INTERNAL : 62.7 m²
EXTERNAL : 21.5 m²



The site plan and floor plan are not to scale; measurements are indicative and in metres. Bushes and trees are placed for illustration purposes. Plans should not be relied on. Interested parties should make and rely on their own enquiries. All other information provided has been collected from reliable sources but cannot be guaranteed for accuracy.