

520/18 Epping Park Drive Epping, NSW



North-east Facing, Sun-Filled & Peaceful Apartment with Double Side-by-Side Car Spaces

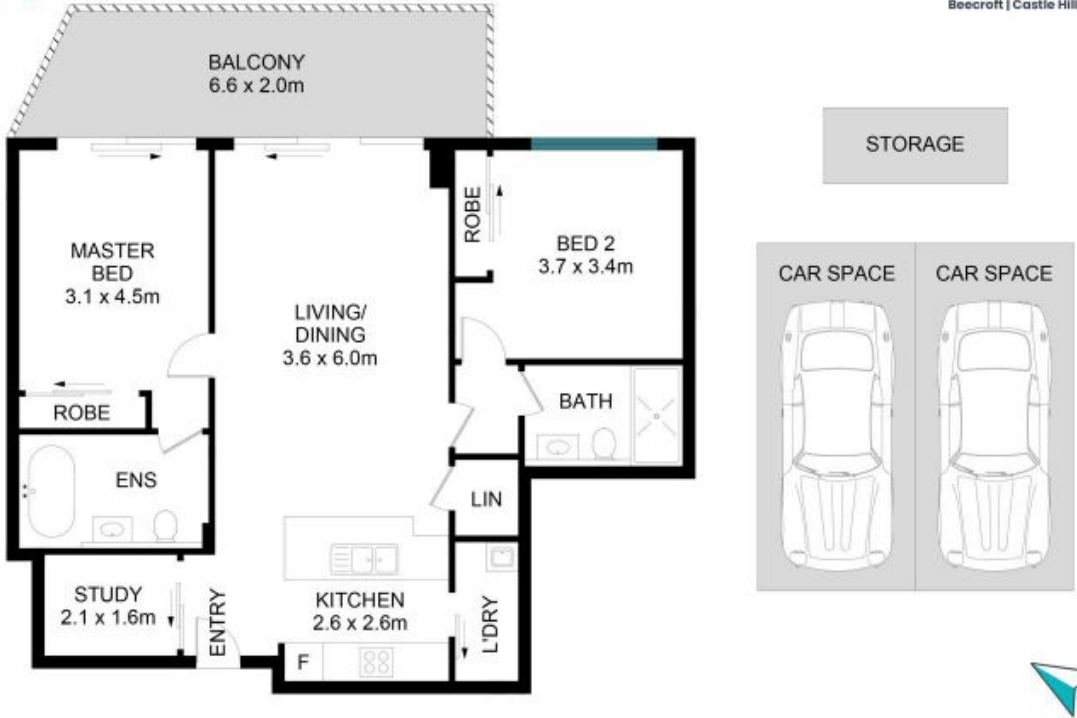
Enjoy modern living in the highly sought-after Epping Park community. Positioned on the top floor, this light-filled apartment features extra-high ceilings and a spacious terrace, creating the perfect space for relaxing or entertaining while enjoying peaceful garden views.



Juliet (Jiangmin) Chen

0408 997 997

520/18 Epping Park Drive
Epping



The site plan and floorplan are not to scale; measurements are indicative of metres. Bushes and trees are placed for illustration purposes. Plans should not be relied on. Interested parties should make and rely on their own enquiries. Other information provided has been collected by reliable sources but cannot be guaranteed for accuracy.