

29b Somerville Street Arncliffe, NSW 5 4 1

Brand-new luxe living

A superb finish, ideal floorplan and desirable location combine to make this brand-new residence a stand-out.

Price: **SOLD PRIOR | \$2,420,000**



Sam Abbas

0406 750 075

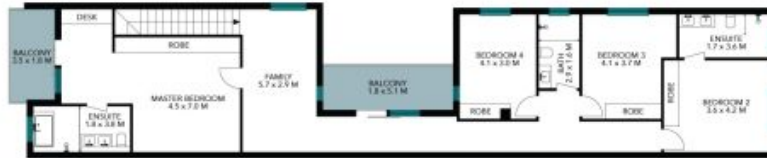


EJ Joseph

0432 969 029



Site Plan



First Floor



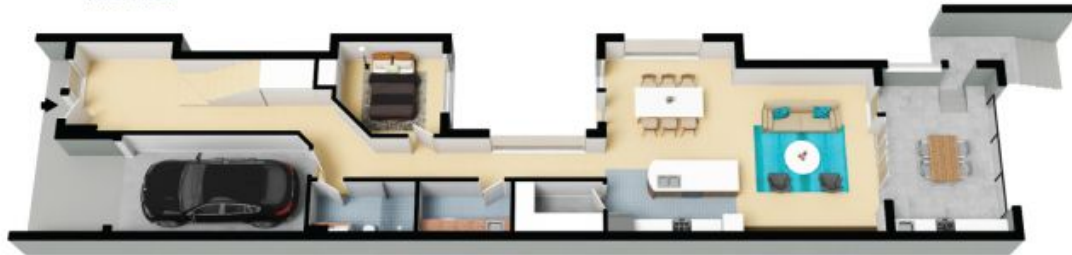
Ground Floor



The site plan and floor plan are not to scale; measurements are indicative and in metres. Bushes and trees are placed for illustration purposes. Plans should not be relied on. Interested parties should make and rely on their own enquiries. All other information provided has been collected from reliable sources but cannot be guaranteed for accuracy.



First Floor



Ground Floor



The floor plan is not to scale; measurements are indicative and in metres. All features included in this 3D plan are for inspiration purposes only. This is not an exact replica of the property or the position of exterior elements. Plans should not be relied on. Interested parties should make and rely on their own enquiries.