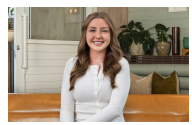


17/145 Balaclava Road Marsfield, NSW      3    2    2

### Modern Dual-Level Townhouse with Private Courtyards & Resort Amenities

This modern dual-level townhouse offers the perfect combination of space, comfort and convenience in a highly sought-after location. Designed for easy living, the home is filled with natural light and offers generous proportions, modern finishes and outstanding convenience, this townhouse presents an excellent lifestyle opportunity in a well-maintained complex.

**Price:** \$1,250 per week  
**Bond:** \$5,000  
**Available Date:** 28/04/2026



**Jaydn Frintzilas**  
0468 998 294



**Emma Barwood**  
0434 808 385

17/145 Balaclava Road  
Marsfield

STONE



The floor plan is not to scale, measurements are indicative and in metres. All features included in this 3D plan are for inspiration purposes only. This is not an exact replica of the property or the position of exterior elements. Plans should not be relied on. Interested parties should make and rely on their own enquiries.