

STONE



11/23-25 Forest Grove Epping, NSW



Leafy, private outlook in peaceful parkside enclave approx.550m from station

- Stylish interiors with high shadow line ceilings exuding a sense of space
- Open plan living and dining areas with outdoor flow for easy entertaining
- Spacious outdoor area features absolute privacy, water and gas outlet
- Stone kitchen with gas cooktop, dishwasher; Floor to ceiling cupboards
- Two bedrooms with mirrored built-ins, master with ensuite and balcony access
- Two deluxe bathrooms feature rain showers and striking mosaic design
- Privacy of only one common wall; Reverse-cycle air-con, video intercom
- Level entry from the street will suit any buyers seeking easy accessibility

Inspect: Saturday, 16th May 2026 10:00 - 10:30
 Wednesday, 20th May 2026 10:00 - 10:30
Auction: 06/06/2026 12:30 pm

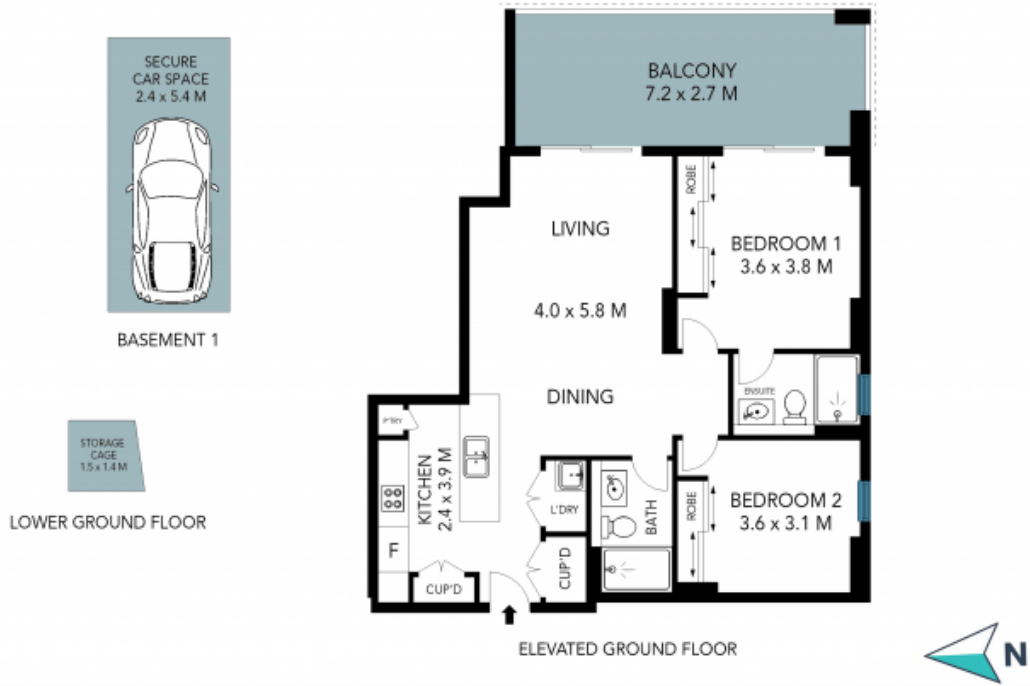
Price: Auction Guide \$740,000
Council Rates: \$346.00 p/q
Water Rates: \$200.00 p/q
Strata Rates: \$1,355.00 p/q



Vincent Goh

0412 316 797

11/23-25 Forest Grove
Epping



The site plan and floorplan are not to scale; measurements are indicative of metres. Bushes and trees are placed for illustration purposes. Plans should not be relied on. Interested parties should make and rely on their own enquiries. Other information provided has been collected by reliable sources but cannot be guaranteed for accuracy.