



35 Vicary Lane Orangeville, NSW

5 

3 

12 

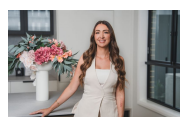
Panoramic Luxury Living in an Exclusive Lifestyle Setting

Price: \$2,950,000  
Council Rates: \$3,820.00/year (approx)



**Anthony Grima**

0421 228 414



**Rebecca Philp**

0403 613 271



## 35 Vicary La, Orangeville NSW 2570



The floor plan is not to scale, measurements are in metres. Exterior elements are not in position.  
Plans should not be relied on. Interested parties should make and rely on their own enquiries.  
All other information provided has been collected from reliable sources but cannot be guaranteed for accuracy.