



3 Cashmere Drive Elderslie, NSW



Family Home in Popular Elderslie Pocket

Positioned in the ever-popular suburb of Elderslie, this well-presented four-bedroom home offers the perfect combination of space, comfort and easy family living. With a practical layout, modern updates and great outdoor entertaining, it's a home ready to move straight in and enjoy.

Price:

Contact Agent



Gary Luke

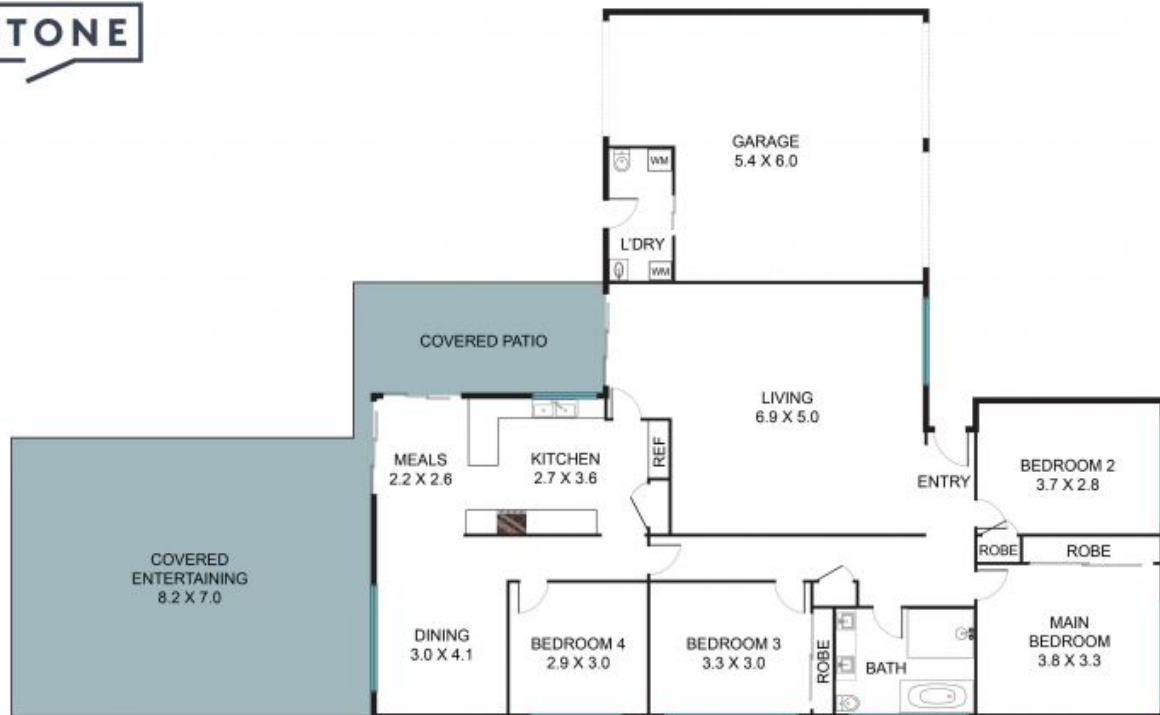
0418 451 105



Kaitlin Hall

0404 529 516

STONE



3 Cashmere Dr, Elderslie NSW 2570



The floor plan is not to scale, measurements are in metres. Exterior elements are not in position.
Plans should not be relied on. Interested parties should make and rely on their own enquiries.
All other information provided has been collected from reliable sources but cannot be guaranteed for accuracy.