



49/121-133 Pacific Highway Hornsby, NSW



Sold by Geraldine Wang 0452 562 183

Sold by Geraldine Wang 0452 562 183

Positioned just a 2-minute easy walk to Hornsby Station and Westfield, this spacious, private and luxurious apartment immerses surprisingly calm ambiance with the garden outlook, private balcony, generous proportions throughout and only one common wall. The open-plan gourmet kitchen features high-quality finishes including gas cooking, granite benchtops and premium Smeg appliances. Double tinted glass doors and windows for soundproof and temperature regulation. The roof-top garden next to the unit provides great outdoor activities without stepping out of the complex.

Price:

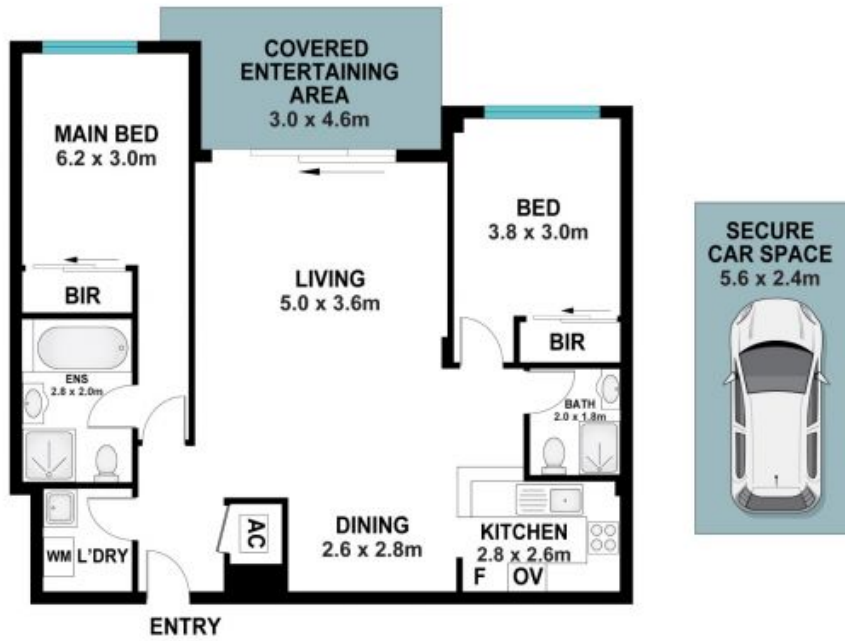
Sold by Geraldine Wang 0452 562 183



Geraldine (Xiao-Bin)

0452 562 183
Wang

49/121-133 Pacific Highway,
Hornsby



The site plan and floor plan are not to scale; measurements are indicative and in metres. Bushes and trees are placed for illustration purposes. Plans should not be relied on. Interested parties should make and rely on their own enquiries. All other information provided has been collected from reliable sources but cannot be guaranteed for accuracy.