

66 The Grand Parade Brighton-Le-Sands, NSW

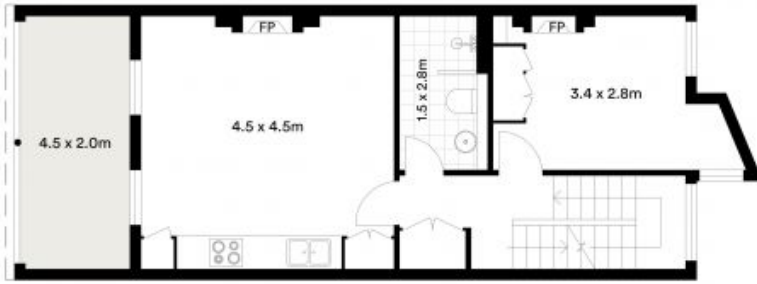
Rare Commercial Terrace - Plus Two Bedroom Residence

Secure your position in one of Sydney's most desirable neighbourhood pockets, right in the centre of Brighton Le Sands - a thriving commercial & residential hub just minutes from the CBD. This 128sqm (approx.) of internal floor space, this brand new Saywell's terrace combines heritage character with versatile potential for creative offices, a boutique showroom or professional services and moments from the Brighton Hotel Sydney.

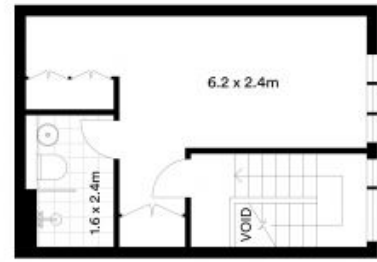


Gerry Filas

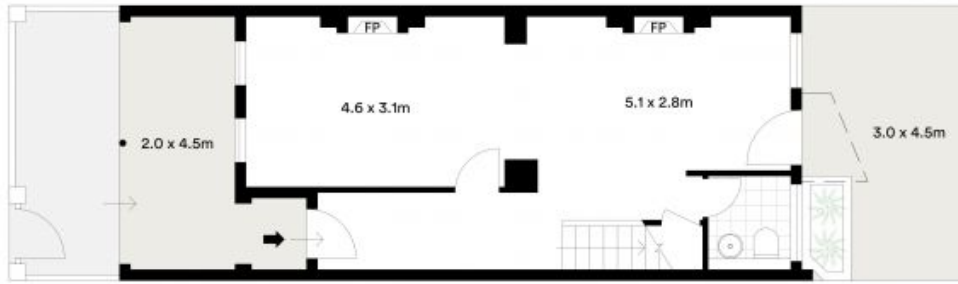
0419 603 623



FIRST FLOOR



SECOND FLOOR



GROUND FLOOR

66 The Grand Parade, Brighton-Le-Sands

