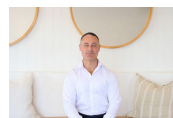




5B/51 Jindalee Road Port Macquarie, NSW

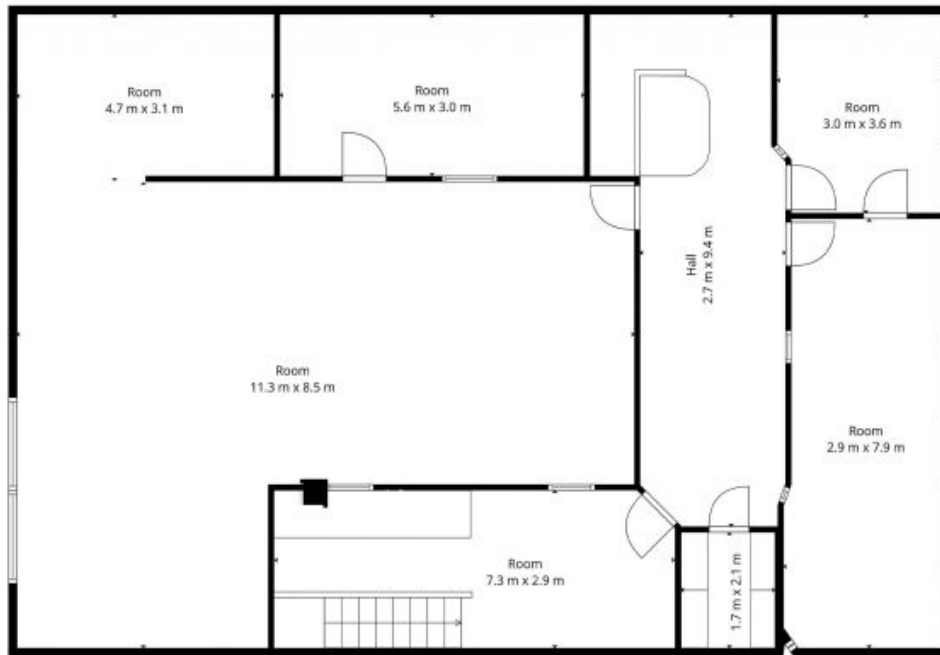
195sqm Office Suite | Prime Jindalee Road Location | Excellent Value

Positioned within the established Jindalee Road industrial precinct, this well-presented 195sqm office tenancy offers a functional and light-filled workspace suited to a range of professional, administrative or consulting users.



Luke Lipscombe

0411 705 140



Internal: 197sqm



The site plan and floor plan are not to scale; measurements are indicative and in metres. Bushes and trees are placed for illustration purposes. Plans should not be relied on. Interested parties should make and rely on their own enquiries. All other information provided has been collected from reliable sources but cannot be guaranteed for accuracy.