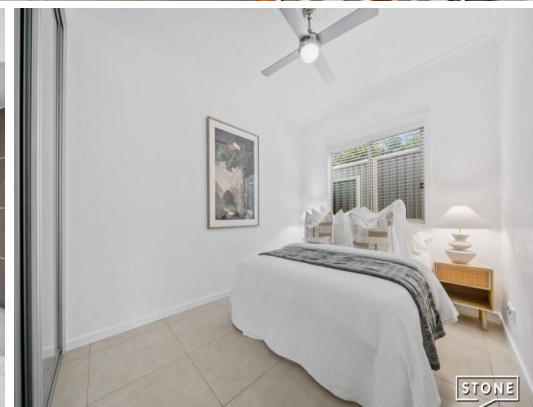
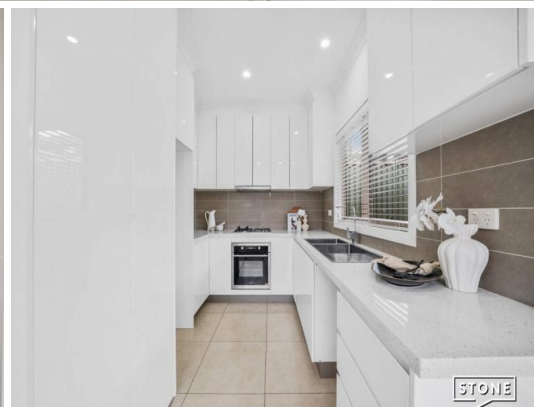


STONE



11A Patterson Street Ermington, NSW



Stylish Two-Bedroom Home in Highly Sought after location!

Enjoy the perfect blend of privacy, comfort, and versatility with this beautifully presented, self-contained granny flat.

Features Include:

- Two generously sized bedrooms, both fitted with ceiling fans and built-in wardrobes for ample storage
- Contemporary bathroom featuring modern finishes
- Stylish kitchen complete with stone benchtops and quality gas cooking appliances
- Light-filled open-plan living and dining area designed for easy, modern living
- Seamless flow to a covered, all-seasons outdoor entertaining space-perfect for year-round enjoyment
- Low maintenance yard including large storage shed.
- Off street parking for one car

Price: \$650.00 pw

Available Date: 30/03/2026

Sienna Petracca

02 9630 8899