



80 Bridge Street Schofields, NSW



Limitless Potential for Astute Buyers! North-East facing substantial ~1,000sqm block of land.

An increasingly rare offering in one of Western Sydney's most dynamic and fast-growing locations, this substantial 1,000sqm (approx.) North-East facing landholding presents a compelling opportunity for developers, investors, and land bankers seeking scale, flexibility, and future upside. The existing residence provides immediate holding income, allowing flexibility while future plans are explored.

Price: \$1,370,000 - \$1,450,000



Krupa Modhia

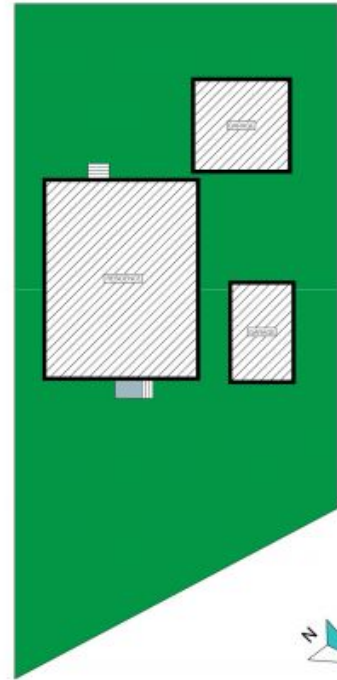
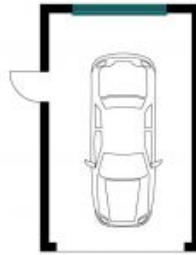
0433 199 488



Gagan Bindra

0425 243 959

**80 Bridge Street,
Schofields**



The site plan and floor plan are not to scale; measurements are indicative and in metres. Bushes and trees are placed for illustration purposes. Plans should not be relied on. Interested parties should make and rely on their own enquires. All other information provided has been collected from reliable sources but cannot be guaranteed for accuracy.