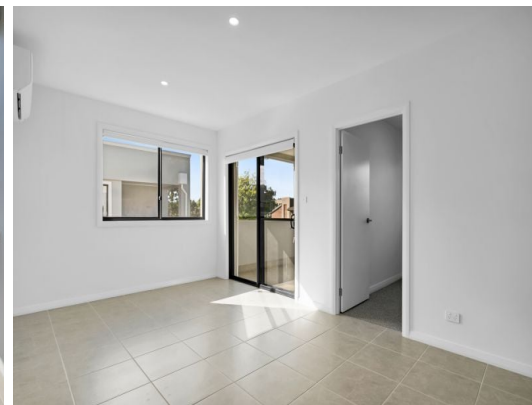


STONE



1A Lotus Lane Oran Park, NSW



## Brand new two-bedroom granny in the heart of Oran Park

This perfectly positioned two-bedroom granny flat in the highly sought-after Oran Park locale offers low-maintenance living in an exceptionally convenient setting. Directly opposite the Oran Park Podium and just moments from local parks and reputable schools, it also provides seamless access to Narellan Town Centre, Camden, and Camden Valley Way, delivering unmatched convenience at every turn.

**Price:** \$600 per week

**Bond:** \$2,400

**Available Date:** 10/04/2026

**Leasing Department**

0481064443

**Stone Macarthur**