

G03/16 Warburton Street Gymea, NSW

2 2 1

Convenient Garden Apartment

Enjoy a relaxed, convenient lifestyle in this bright and spacious ground floor apartment, perfectly positioned near Gymea Village, train station and adjacent to Hazelhurst Gallery. Nestled in a quiet, leafy setting, this property offers comfort and practicality in equal measure.

Price: \$800 per week
Bond: \$3,400
Available Date: 29/04/2026



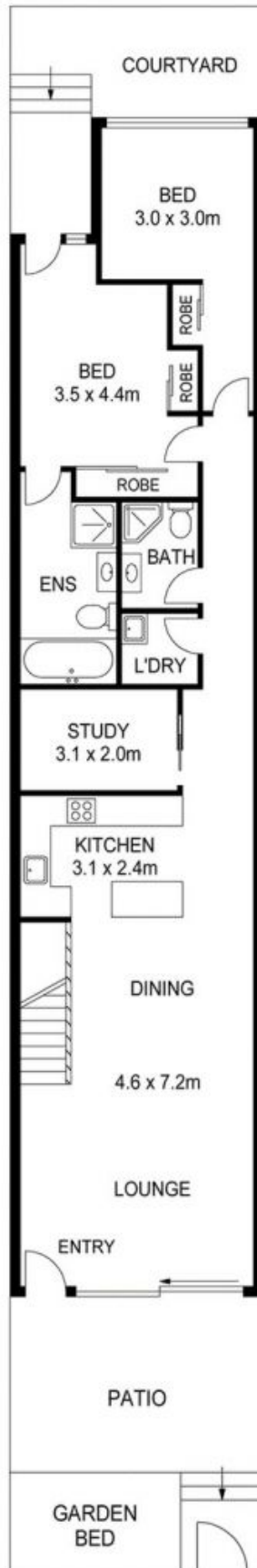
Saskia Roberts

0491 168 530



Georgia Rollason

02 9520 2296



SCALE (METRES)

PLANS SHOWN ONLY INDICATIVE OF LAYOUT. DIMENSIONS ARE APPROXIMATE.

G3/16 WARBURTON STREET, GYMEA