



62 Lord Street Roseville, NSW

4 

2 

2 

Elegant Family Living in a Prestigious Roseville Setting

Positioned in one of Roseville's most desirable tree-lined streets, 62 Lord Street presents an exceptional opportunity to secure a family residence in this tightly held enclave. Combining generous proportions, timeless character and a peaceful garden setting, this well maintained home offers the perfect balance of comfort, space and convenience.

Price:

Off-Market Opportunity!



Jill Henry

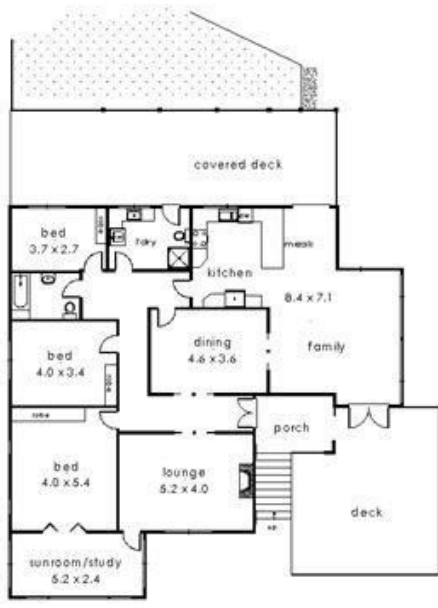
0416 493 555



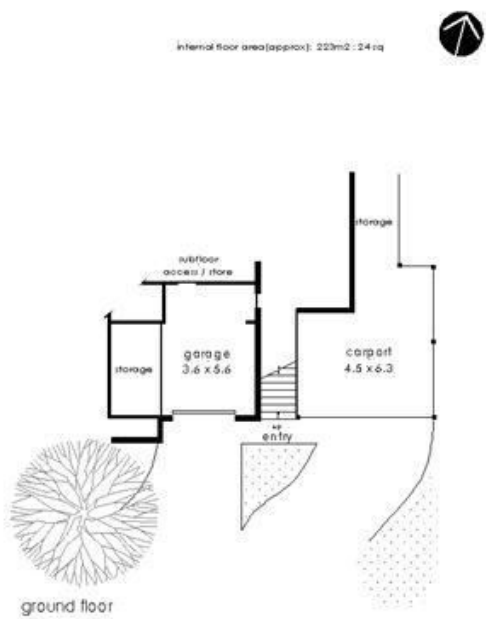
Sahil Kotian

0434 172 588

Designer: K & S Design - Architects Ltd
Building in OXFORD FLOORPLAN SYMBOL - RUMBLE
Tel: 01491 847474, Mob: 07734 441474
This floor plan serves only as a guide for informational purposes and
should not be relied upon for any specific detail. No liability will be accepted.



first floor



ground floor

62 lord st, roseville

