



1 Willow Tree Close Stapylton, QLD



The Perfect First Step or Smart Investment

Whether you're looking to step into the market or secure a low-maintenance investment, this well presented free-standing home offers outstanding value in a convenient Stapylton location.

Price:

Contact Agent



Jason Savage

0401 546 762



Eva Point

0416 776 500



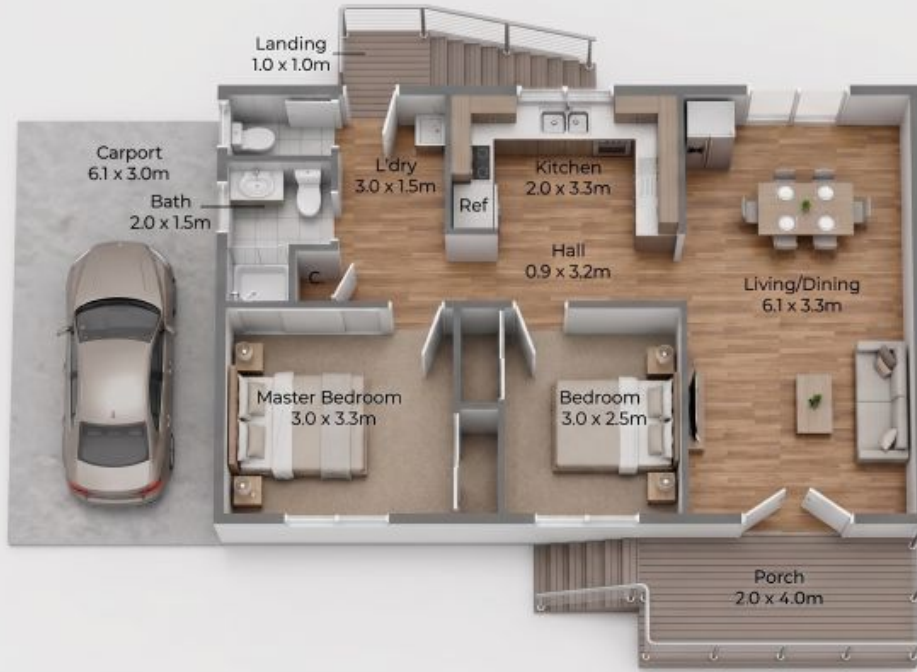
1 Willow Tree Close, Stapylton

Internal Size: 59sqm | External : 27sqm | Total Size: 86sqm



Jason Savage | D401 546 762

This floor plan is for illustrative purposes only. Whilst every attempt has been made to ensure the accuracy of this floor plan, all measurements are approximate only. No responsibility is taken for any errors, omission or mis-statement. Potential purchasers should make their own enquiries as to the accuracy of this floor plan.



1 Willow Tree Close, Stapylton

Internal Size: 39sqm | External : 27sqm | Total Size: 88sqm



Jason Savage | 0401 546 782

This floor plan is for illustrative purposes only. Whilst every attempt has been made to ensure the accuracy of this floor plan, all measurements are approximate only. No responsibility is taken for any error, omission or false statement. Potential purchasers should make their own enquiries as to the accuracy of this floor plan.