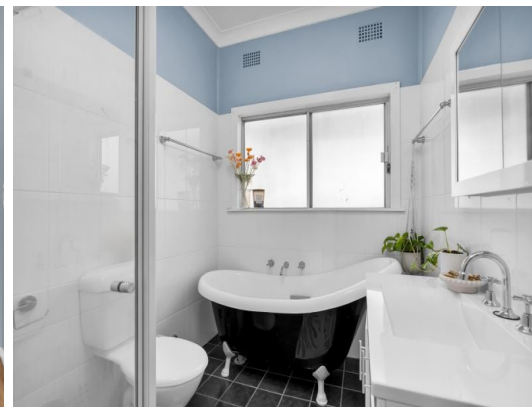


House & granny flat



61 Hoddle Avenue Bradbury, NSW



One Smart Package!

An outstanding dual-income opportunity awaits with this well-presented property. Offering both a comfortable main residence and a stylish granny flat, each currently tenanted and generating strong, reliable returns.

Inspect: Saturday, 9th May 2026 10:00 - 10:30

Price: \$1,100,000 - \$1,200,000

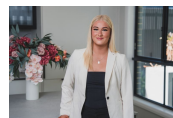
Council Rates: \$604.60 p/q

Water Rates: \$340.00 p/q



Matt Faint

0431 008 445



Jasmine Bourne

0439 285 598

STONE



61 & 61A Hoddle Ave, Bradbury NSW 2560



The floor plan is not to scale, measurements are in metres. Exterior elements are not in position.
Plans should not be relied on. Interested parties should make and rely on their own enquiries.
All other information provided has been collected from reliable sources but cannot be guaranteed for accuracy.