



39 Gibsons Road Figtree, NSW

3 1 1

Art Deco inspired home brimming with potential

Capturing spectacular elevated views of the neighbourhood to the escarpment from a sun filled north facing position, this Art Deco-inspired property offers immense potential to update, personalise or knock down and rebuild (STCA) on a 554sqm (approx.) block with a 30m (approx.) frontage. It's approx. 400m to both Figtree Public and High Schools, and approx. 1.4km from Figtree Grove Shopping Centre.

Price:

Price Guide \$960,000 - \$1,050,000



Neil Webster

0439 028 748

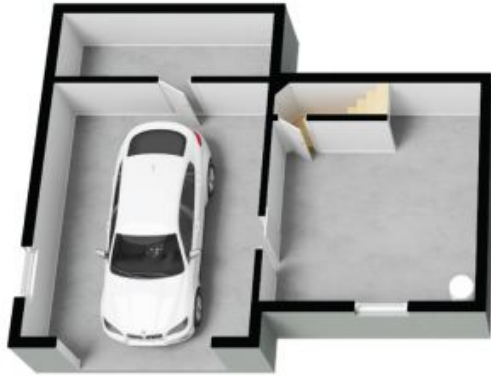


Simon Medina

0438 299 272

39 Gibsons Road
Figtree

STONE



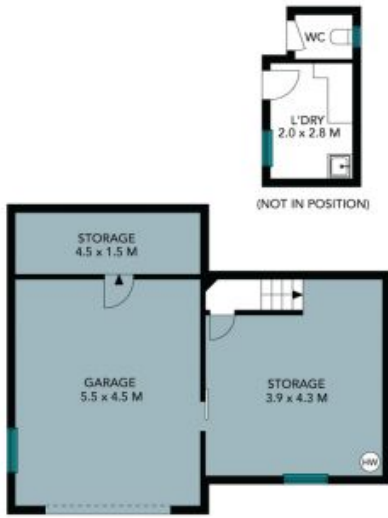
Ground Floor



1st Floor



The floor plan is not to scale, measurements are indicative and in metres. All features included in this 3D plan are for inspiration purposes only. This is not an exact replica of the property or the position of exterior elements. Plans should not be relied on. Interested parties should make and rely on their own enquiries.



Ground Floor



1st Floor



Site Plan



The site plan and floor plan are not to scale; measurements are indicative and in metres. Bushes and trees are placed for illustration purposes. Plans should not be relied on. Interested parties should make and rely on their own enquiries. All other information provided has been collected from reliable sources but cannot be guaranteed for accuracy.