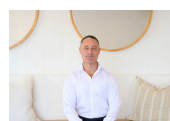




11/84-88 Bold Street Laurieton, NSW

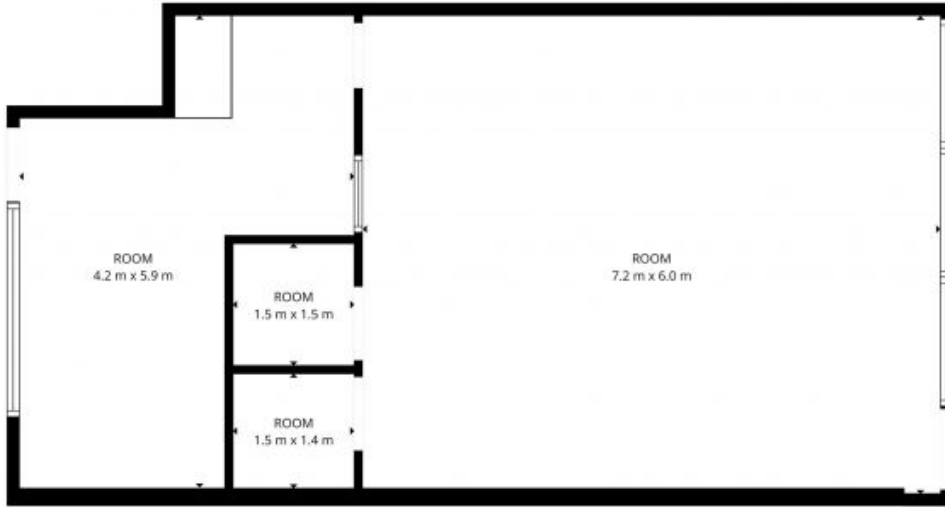
### High Exposure Tenancy in Coles Anchored Haven Plaza

Positioned within the tightly held Haven Plaza, this well presented tenancy offers an excellent opportunity to secure a presence in Laurieton's most established neighbourhood shopping centres.



**Luke Lipscombe**

0411 705 140



Total Internal Area: 65 sqm



The site plan and floor plan are not to scale; measurements are indicative and in metres. Bushes and trees are placed for illustration purposes. Plans should not be relied on. Interested parties should make and rely on their own enquiries. All other information provided has been collected from reliable sources but cannot be guaranteed for accuracy.