



55 Burns Crescent Chiswick, NSW

3 

1 

1 

Elevated Family Home with Stunning Water Views in Prime Chiswick Location

Positioned just one home back from the water's edge, this well-presented family residence enjoys an elevated setting on a generous block, capturing beautiful views across Five Dock Bay.

Inspect: Wednesday, 13th May 2026 3:20 - 3:35

Price: \$1300 per week

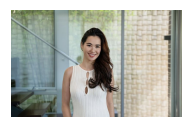
Bond: \$5,200

Available Date: 09/05/2026



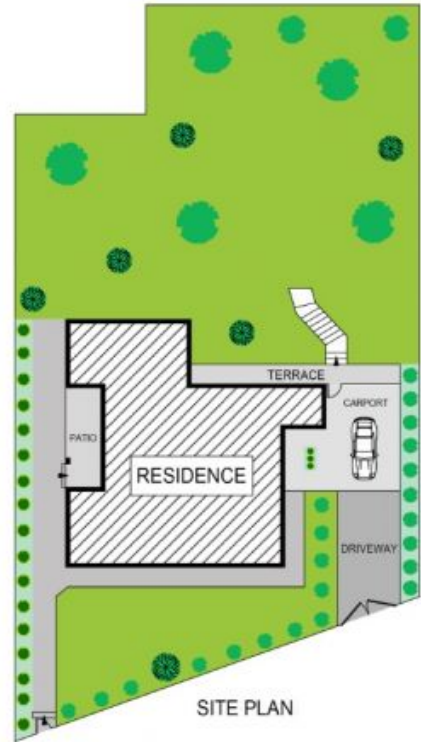
Irma Rinaudo

0426 240 502



Jennifer Howard

0412 630 727



55 BURNS CRESCENT, CHISWICK

DISCLAIMER: PLANS SHOWN ARE FOR MARKETING PURPOSES ONLY. ALL DIMENSIONS ARE APPROXIMATE AND NOT TO SCALE. THEY ARE SUBJECT TO ERRORS AND INACCURACIES AND NO LIABILITY WILL BE ACCEPTED. INTERESTED PARTIES SHOULD MAKE THEIR OWN INQUIRES.



STONE