

28 Holdsworth Street Newtown, NSW

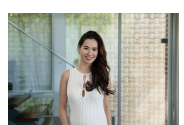
4 4 1

Elegant Tri-Level Terrace in Newtown

Inspect: Wednesday, 13th May 2026 5:00 - 5:20
Price: \$2200 per week
Available Date: 23/05/2026



Irma Rinaudo
0426 240 502



Jennifer Howard
0412 630 727



The floor plan is not to scale, measurements are indicative and in metres. Colour statements are not to position. Plans should not be relied on, interested parties should make and rely on their own enquiries. All other information provided has been collected from reliable sources but cannot be guaranteed for accuracy.

28 Holdsworth Street, Newtown

