



4/23 McLeod Street Mosman, NSW

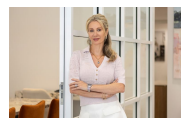


Waterfront, North Facing Abode with Tranquil Bay Views

Commanding a prized north-facing position within the exclusive waterfront 'Amalfi' building, this beautifully presented apartment captures breathtaking panoramas across Mosman Bay to the city skyline, delivering an exceptional lifestyle of peace, luxury and effortless harbourfront living.

Inspect: Saturday, 16th May 2026 11:00 - 11:30

Price: Contact Marize Bellomo



Marize Bellomo

0414 972 203

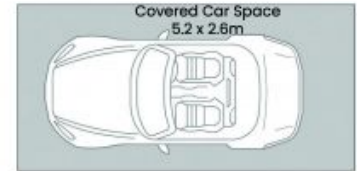


Alanna Tohme

0450 862 088



First Floor



Ground Floor

Apartment Area: 117.10 Sqm approx.
Parking / Storage Area: 20.00 Sqm approx.
Total Area: 137.10 Sqm approx.



The site plan and floorplan are not to scale; measurements are indicative and in metres. Bushes and trees are placed for illustration purposes. Plans should not be relied on. Interested parties should make and rely on their own enquiries. All other information provided has been collected from reliable sources but cannot be guaranteed for accuracy.