



26 Lentara Road Bayview, NSW

3 

2 

4 

An Acre of Coastal Grandeur with Pittwater and Ocean Views

Inspect: Saturday, 16th May 2026 12:00 - 12:30

Price: Guide \$4,750,000



Ryan Petrie

0403 988 123

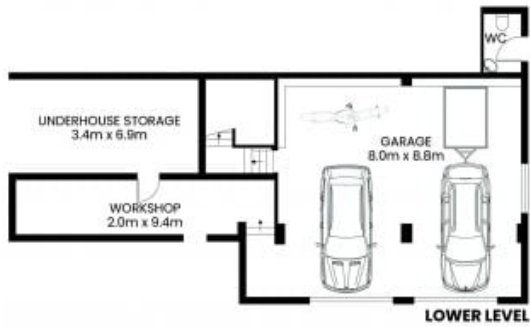
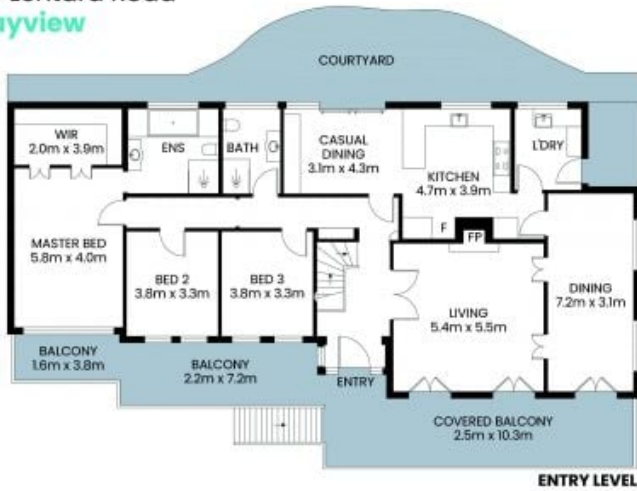


Adrian Hybner

0410 644 985

26 Lentara Road
Bayview

STONE



Internal area: 327m²
 Incl Lower Level
 Balcony & Pavilion area : 118m²
 Total area : 445m²

The site plan and floor plan are not to scale; measurements are indicative and in meters. Bushes and trees are placed for illustration purposes. Plans should not be relied on. Interested parties should make and rely on their own enquiries. All other information provided has been collected from reliable sources but cannot be guaranteed for accuracy.