



13 Crescent Drive Margate, TAS

3

1

1

10

10-Car Undercover Parking ? A Rare Margate Property with Space & Potential

Set on a generous parcel of land (just under half an acre) in a sought-after Margate location, this solid 1953-built, offers the perfect blend of character, space and future potential.

Inspect: Friday, 15th May 2026 10:00 - 10:30

Price: Offers Over 1.1m



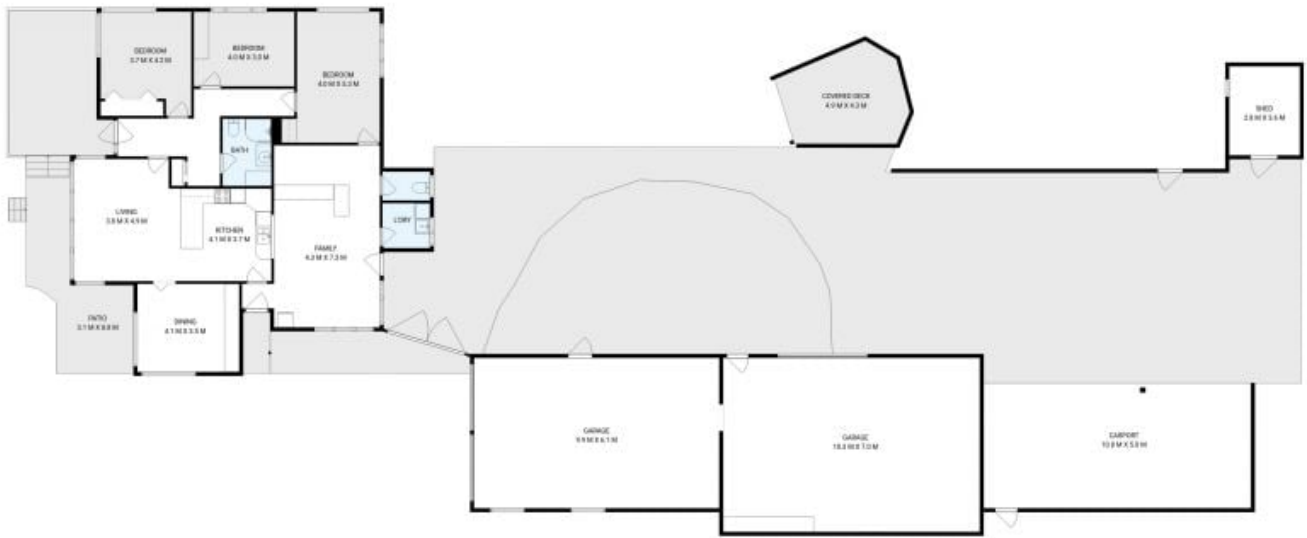
Jane Bendall

0407 672 204



Jane Bendall

0407 672 204



13 Crescent Drive, Margate
House area: 183sqm

Areas and dimensions are approximate and therefore this floor plan should only be used for illustrative purposes.
Real Estate Marketing by nextcreative.com.au

