



33/1-3 Eulbertie Avenue Warrawee, NSW 2 2 1

Modern comfort & style in an ultra-convenient location

Enjoying an elevated northerly aspect this apartment features fresh, modern interiors with quality finishes throughout. Exceptional proportions and an outstanding location combine to provide a superb lifestyle retreat of style and easy-care comfort.

Inspect: Saturday, 16th May 2026 9:45 - 10:15

Price: \$800 Per week

Bond: \$3,200

Available Date: 08/06/2026



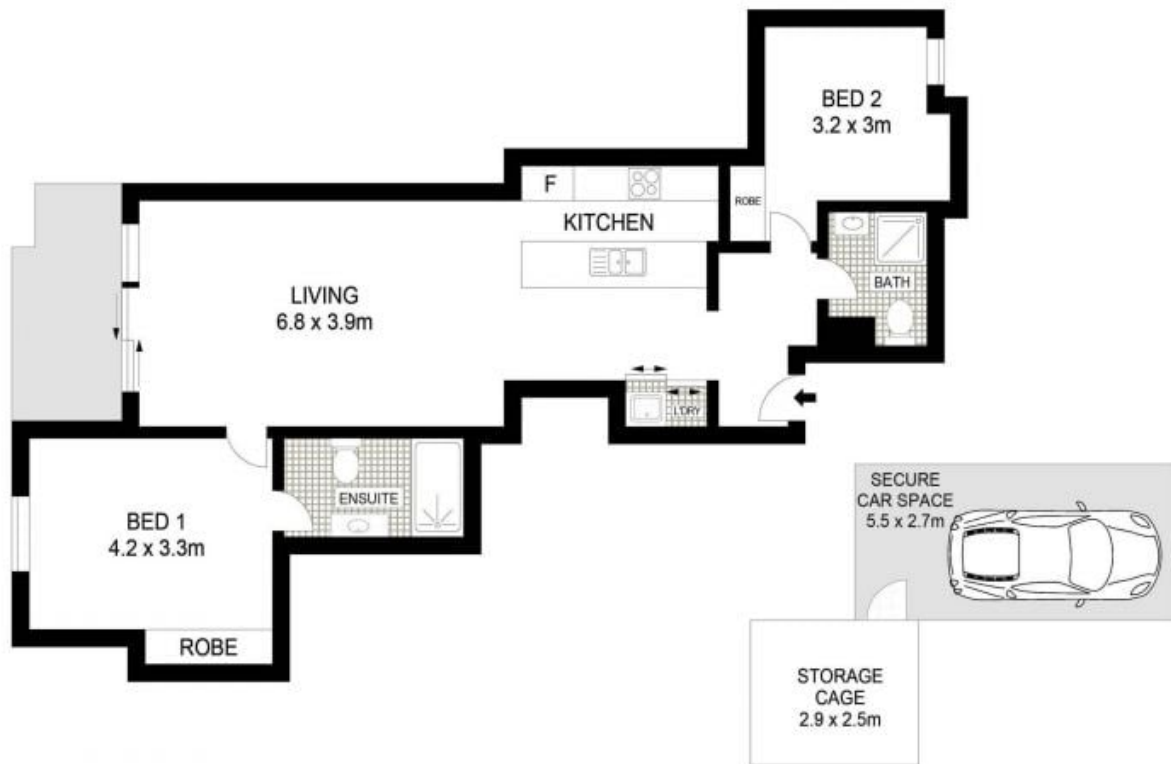
Georgie Miller

0413 773 423



Sia Payne

0456 712 478



Dimensions are approximate. All information contained is gathered from sources we believe to be reliable. However we cannot guarantee its accuracy and interested persons should rely on their own enquiries.
www.visionphoto.com.au

33/1-3 EULBERTIE AVENUE, WARRAWEE

APPROX. LIVING AREA: 88 SQM
 APPROX. PARKING AREA: 17 SQM
 APPROX. TOTAL AREA: 105 SQM

