



401/6-8 George Street Broadbeach, QLD



'The Sterling' Move in late June 2026. Limited Residences Remaining.

Price: \$2,395,000

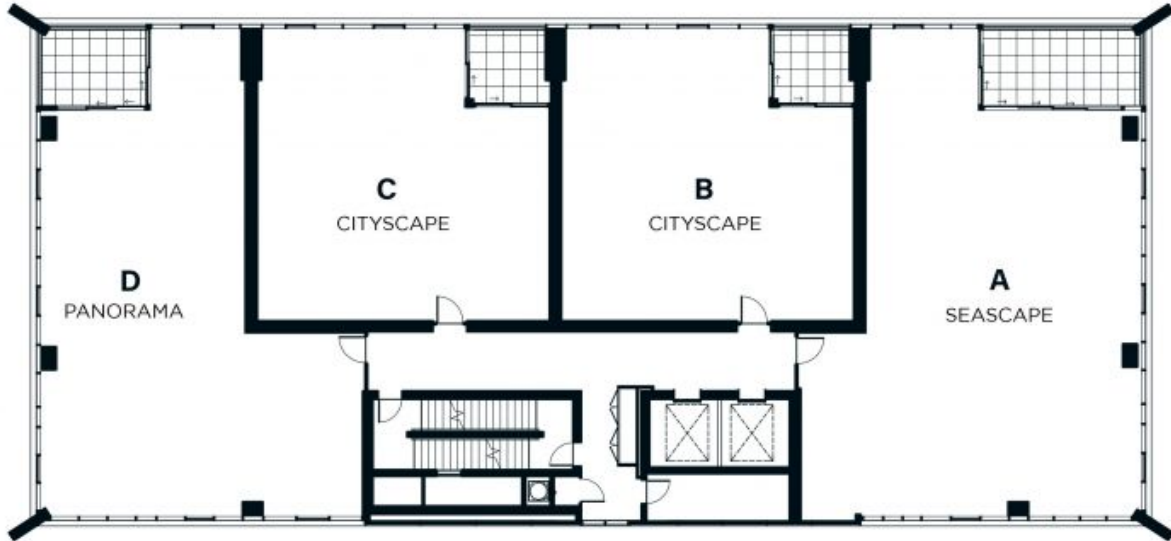
- Panorama Collection Residences Still Available:
- 401/6-8 George Street, Broadbeach ? Listed at \$2,395,000
 - 1201/6-8 George Street, Broadbeach ? Listed at \$2,595,000
 - 1601/6-8 George Street, Broadbeach ? Listed at \$2,625,000



Colin George

0404 440 386

THE
STERLING
BROADBEACH



Disclaimer:

The particulars in this document are set out as a general outline only. This is representative as a guide only and does not constitute an offer or a contract. All floor areas measured to outside face of external walls and centre of party walls. First floor plans exclude area of internal stairs and voids (as measured at ground floor). All reasonable care has been taken in the preparation of this floor plan. Intending purchasers are advised to carry out their own investigations of the correctness of each description or reference. Furniture layout is indicative. All details were correct at the time of printing and are subject to change without notice. * Slight variation in size depending on location of lot. Please refer to survey plans in contract for clarification of lot sizes.

THE STERLING

BROADBEACH

