



305/42-44 Park Avenue Waitara, NSW



Modern & Spacious Apartment in the heart of Waitara

Perfectly positioned within the highly desirable "Eden Gardens" complex, this stylish and light-filled two bedroom apartment with a northerly aspect situated on the third floor delivers comfortable, low-maintenance living in a highly convenient location.

Inspect: Saturday, 16th May 2026 2:00 - 2:30

Price: \$720 Per week

Bond: \$2,880

Available Date: 22/05/2026



Georgie Miller

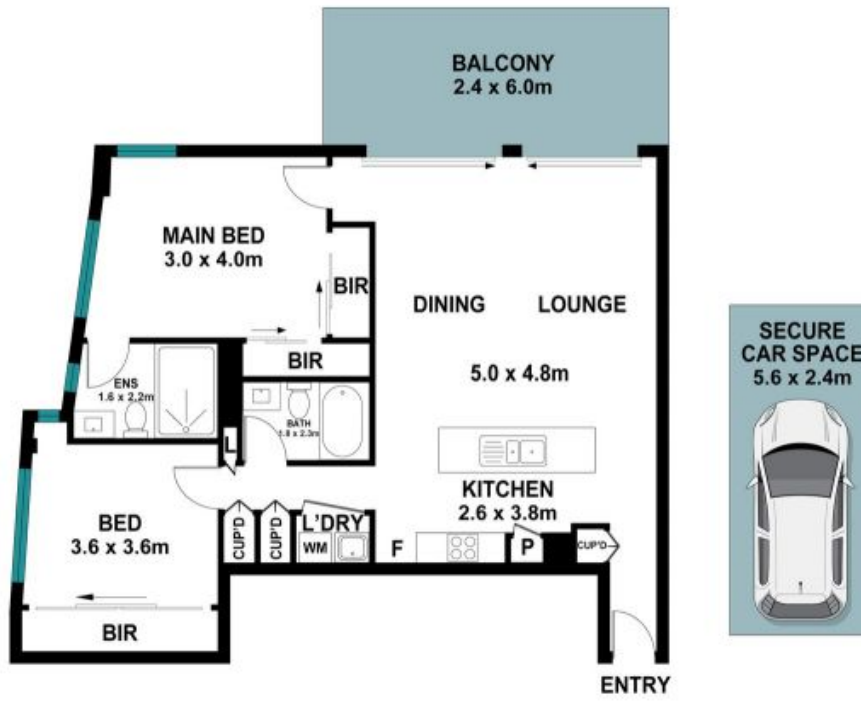
0413 773 423



Sia Payne

0456 712 478

305/42-44 Park Avenue,
Waitara



The site plan and floor plan are not to scale; measurements are indicative and in metres. Bushes and trees are placed for illustration purposes. Plans should not be relied on. Interested parties should make and rely on their own enquiries. All other information provided has been collected from reliable sources but cannot be guaranteed for accuracy.